

robo C2



EN FR ES

DE IT PL

日本語

汉语

▶ robo3d.com/getstarted

Quick start guide

Greetings, Maker... Welcome to the Robo family!

We're thrilled you're here and want to extend a big thank you for your purchase.

Whether the making happens at home, in the workplace or in the classroom, this is the tool engineered to help you unlock the limitless possibilities of your creative potential.

So, go ahead. Make and be proud. Make the amazing. Make it all happen — now.

Make the imagined.

Register your Robo C2

To activate your warranty and receive all the latest information about your Robo C2, visit:

robo3d.com/register

See full terms and conditions of warranty at: robo3d.com/warranty

24/7 Customer Service Support

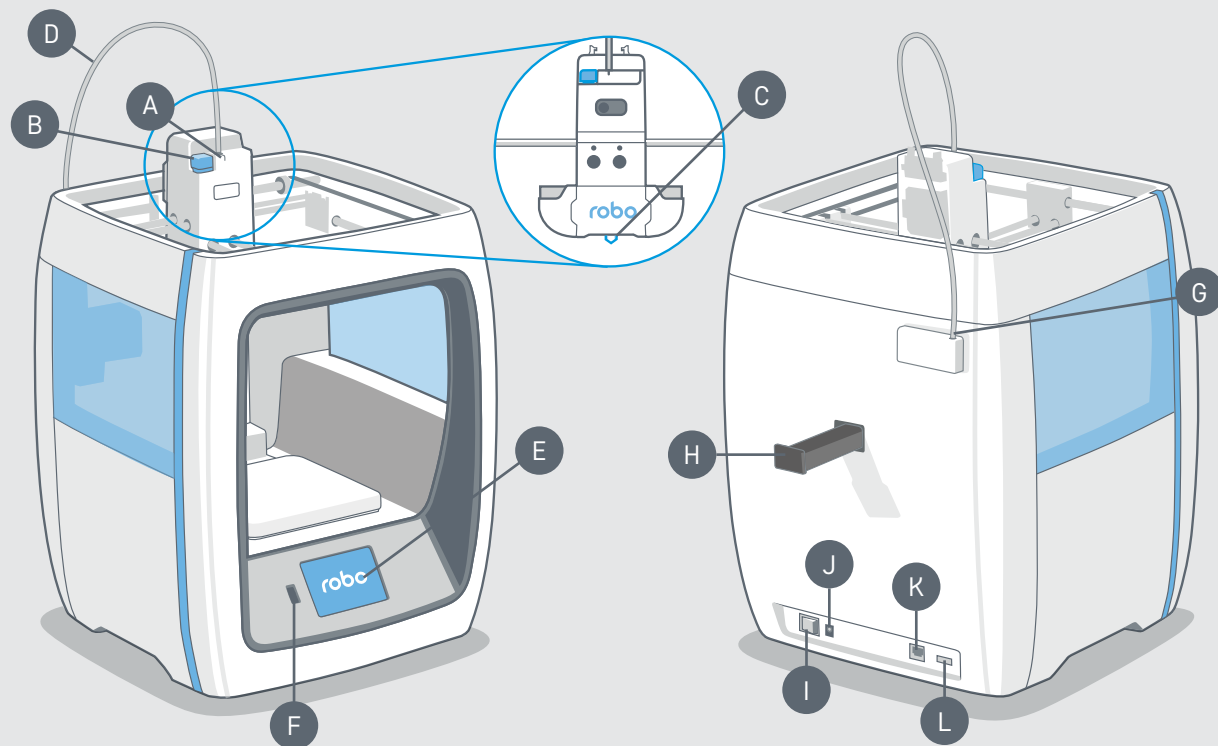
Got questions or need help with your Robo product?

Call us anytime — day or night **844-476-2633**
or email at **help@robo3d.com**



Meet Robo C2

- | | | | |
|---|-------------------------|---|-----------------------|
| A | Filament feed hole | G | Filament sensor block |
| B | Filament release button | H | Filament spool holder |
| C | Extruder nozzle | I | Power switch |
| D | Filament feed tube | J | Power in |
| E | Interactive touchscreen | K | Ethernet port |
| F | USB port | L | USB port |



Control each print with the Robo App

Download the free Robo App and easily control each print right from your Apple iOS device.



Multiple printers, one app

Control multiple prints and printers.



Cloud storage integration

Connect to cloud based libraries and access thousands of 3D models.



Monitor print progress

Watch every step of your print's progress, view print bed and extruder temperatures — plus, quickly pause and cancel prints.



In-app purchases

Purchase filaments, accessories, print kits and more.



App support and guides

Access other getting started guides and the Robo support center.



COMING SOON TO
Google Play

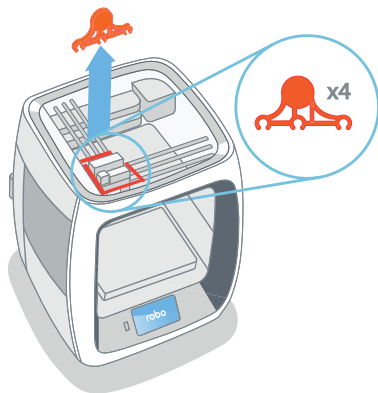


Download on the
App Store

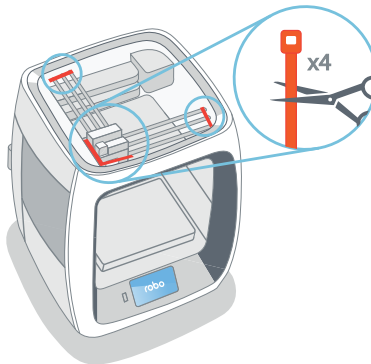
Step 1 Initial set-up



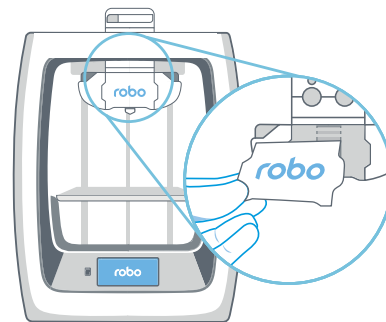
You can also watch how
to set up Robo C2:
robo3d.com/getstarted



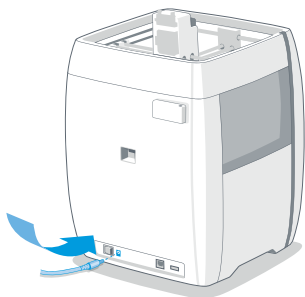
1. Remove the four orange protective gantry clips by pushing them over sideways with your thumb on the clip's round area (do not pull straight up).



2. Cut four zip ties.

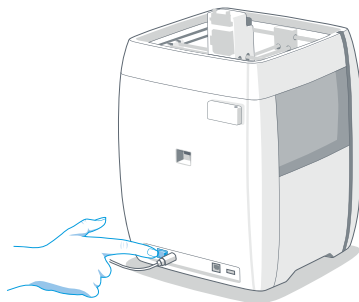


3. Magnetically attach extruder face plate (from accessories box) to extruder assembly.



4. Connect power adapter and cable to Robo C2, then plug into power outlet.

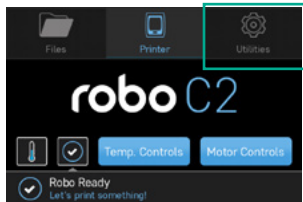
Note: Only use power adapter and cable provided



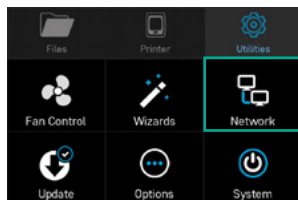
5. Turn on Robo C2 power switch.

Step 2 Connect to Wi-Fi

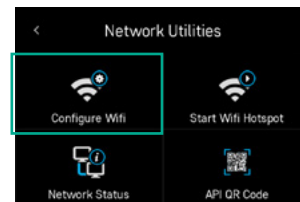
It is highly recommended to connect Robo C2 to Wi-Fi — this allows you to directly print from the Robo App or Chromebook.



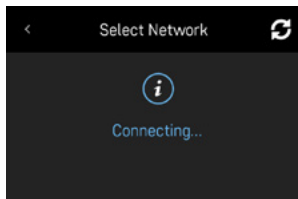
1. Select **UTILITIES** on touchscreen.



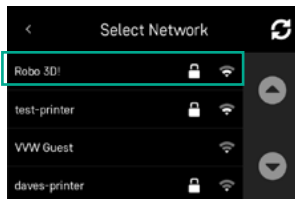
2. Select **NETWORK**.



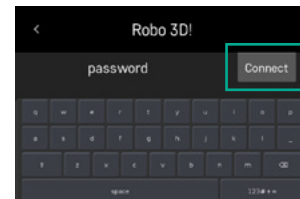
3. Select **CONFIGURE WI-FI**.



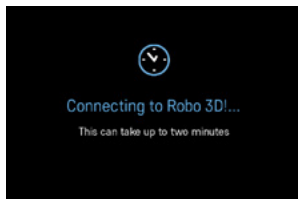
4. Robo C2 will scan available networks. This may take a few moments.



5. Select your Wi-Fi network.



6. Use on-screen keyboard to enter your password. Then select **CONNECT**.



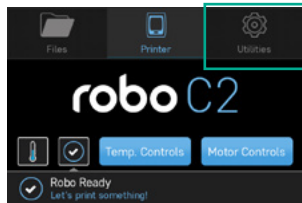
7. Robo C2 may take a few moments to connect to your Wi-Fi network.



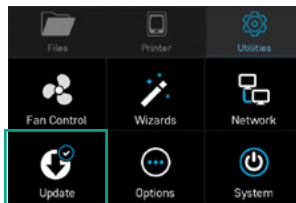
Built-in hotspot

Robo C2 has a built-in hotspot for direct wireless printing when not connected to Wi-Fi. For more information, see the full manual at: robo3d.com/manual

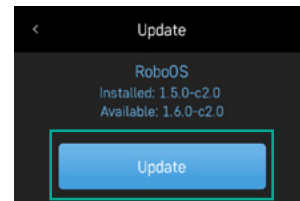
Step 3 Ensure software is up-to-date



1. Select **UTILITIES** on touchscreen.



2. Select **UPDATE**.



3. Screen will say UP-TO-DATE if software is already updated. If not, select **UPDATE** and the update will begin.



Always keep your Robo C2 up-to-date

Following this process regularly is the best way to confirm your machine is operating with the most recent advancements and functionalities available whenever we release them.

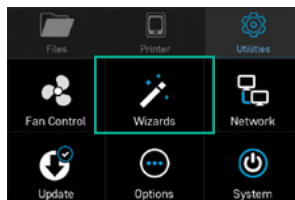
Step 4 Calibration



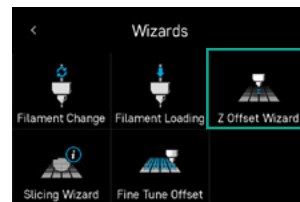
Ensure nozzle is clean prior to starting calibration.



1. Select **UTILITIES** on the touchscreen.



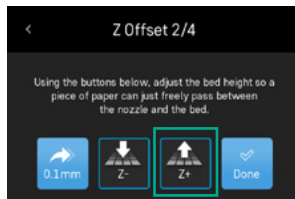
2. Select **WIZARDS** from the list.



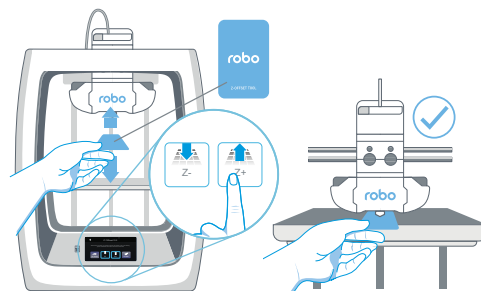
3. Select **Z OFFSET WIZARD**.



4. You will use the included Z-Offset Tool for the next several steps in this section to adjust and calibrate your Z-Offset. If you ever misplace your Z-Offset Tool, a standard sheet of paper will work as well.

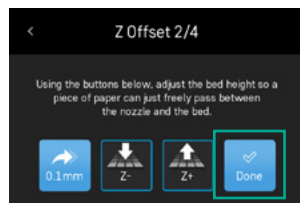


5. Tap the **UP** arrow on the touchscreen until you raise the print bed a fraction of an inch (about 1/16" or 1.5 mm) below the nozzle.

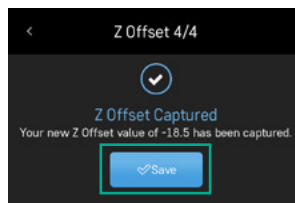


6. Slide the Z-Offset Tool between the nozzle and the print bed — tap the **UP** arrow on the touchscreen until you feel slight resistance against the Z-Offset Tool as you slide it between the nozzle and print bed.

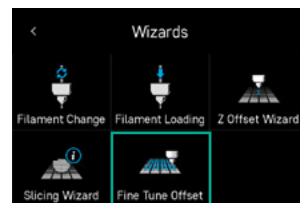
*Note: If it feels/looks like the nozzle is digging into the Z Offset Tool, there is too much resistance. In that case, press the **DOWN** arrow on the touchscreen until you feel only slight resistance.*



7. Once you feel the Z-Offset Tool has slight resistance select **DONE**.

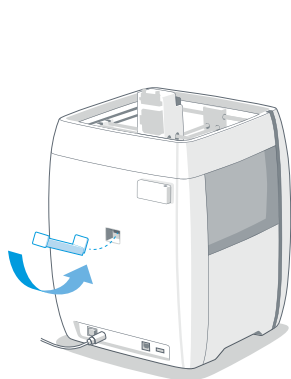


8. Press **SAVE** to finish calibration.

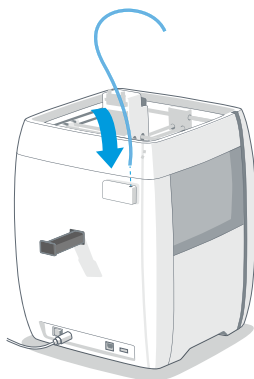


9. If you are still experiencing issues setting the Z-Offset, use the **Fine Tune Wizard** to help guide you through the process in more detail.

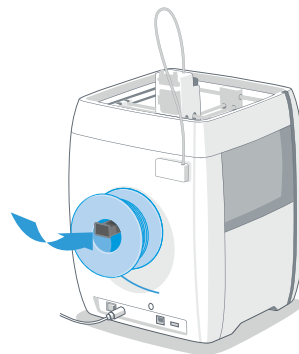
Step 5 Load filament



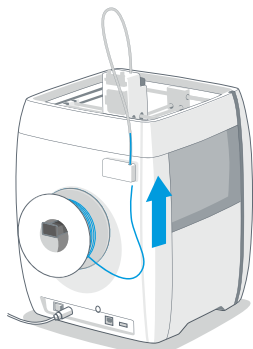
1. Insert filament spool holder into rear slot of Robo C2 with the taller tab end first. Make sure to insert the spool holder completely inside the printer — **not in the small space directly behind the printer's plastic back panel.**



2. Insert filament feed tube into filament sensor block.



3. Hang filament spool onto spool holder.

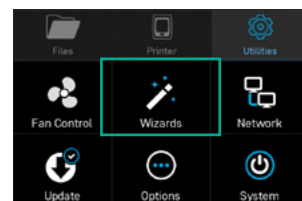


4. Unroll at least 12" (30 cm) of filament and cut the tip with scissors. Thread it through the base of the filament sensor block and into the filament feed tube until it comes out the other side.

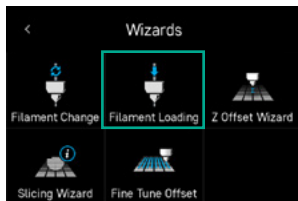
Note: If filament is twisted or bent, clip about 4" (10cm) off end of filament before next step.



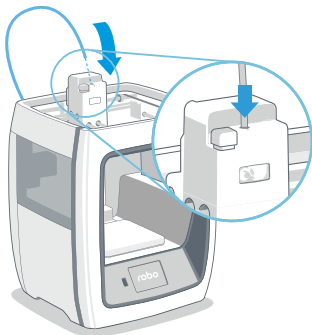
5. Select **UTILITIES** on touchscreen.



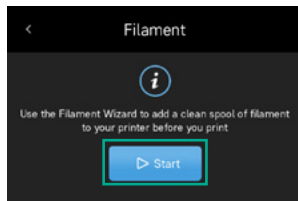
6. Select **WIZARDS** from the list.



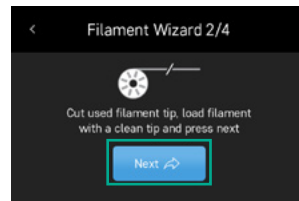
7. Select **FILAMENT LOADING** wizard and follow along with the steps on-screen.



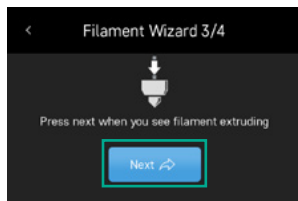
10. Push down filament into filament feed gear until it grabs the filament and pulls it down. Now, pull the filament feed tube down to cover the filament.



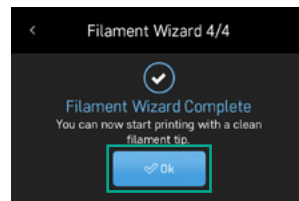
8. Select **START** to begin filament loading process. The printer will take a few moments to heat the extruder.



9. If, for whatever reason, you still need to cut the filament tip, do so now and select **NEXT**.



11. Filament will feed through the extruder and out the nozzle. When you see this, select **NEXT**.

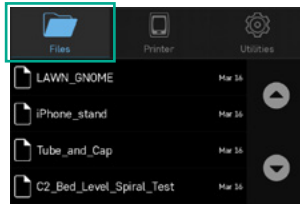


12. You have successfully loaded the filament and are now ready to print! Select **OK** to complete the process.

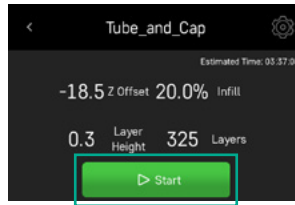
Step 6 Test print



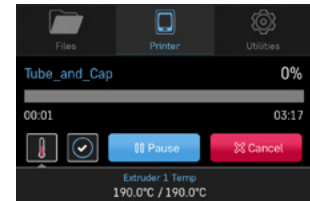
If you have trouble printing, contact
Robo Customer Service for support.
844-476-2633



1. Select **FILES** on touchscreen. Then, select a file to print from the list.



2. Select **START** to begin the print process. The screen will show how long each print will take.

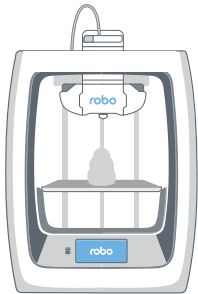


3. Wait several seconds while Robo C2 prepares to print the file.

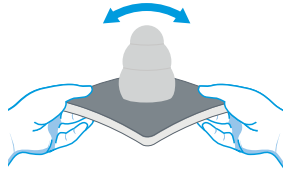
The file will begin printing.

You have the option to select **PAUSE** to pause your print or select **CANCEL** to cancel your print.

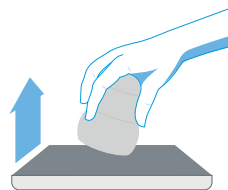
Step 7 Removing a print



1. Lift print bed from a front corner, then pull out print bed.



2. Flex the print bed from several positions to help loosen the print from the print bed.



3. Your print should easily remove from the print bed.



4. If the print is too difficult to remove, carefully use the included spatula to gently pry it free.



Note: Do not force print removal by lifting directly upward. Instead, remove it at an angle by lifting from one of its corners.

Web interface and Chromebook control

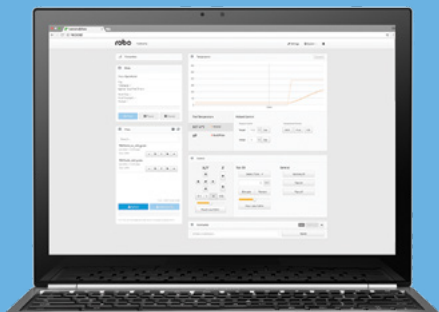
Easily print from and control Robo C2 with your Chromebook or any web browser. Find out how:

robo3d.com/chromebook

To access, first ensure your Robo C2 is connected to Wi-Fi, then connect to your Robo C2 from any web-enabled device on the same Wi-Fi network by going to the Robo C2 IP address. You can find the IP on your Robo C2 in:

Utilities > Network > Network Status > IP

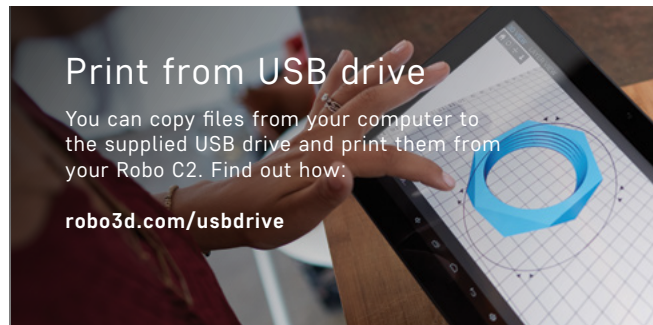
Type in IP number into the web browser address bar and your browser will connect to your Robo C2.



Print from USB drive

You can copy files from your computer to the supplied USB drive and print them from your Robo C2. Find out how:

robo3d.com/usbdrive



Make more with these awesome online resources

Download high-quality models from amazing designers!

myminifactory.com
thingiverse.com
pinshape.com

Join the Robo community — more tips, tricks and in-depth discussions.

community.robo3d.com

Get the latest news and updates — and sign-up for our Robo newsletter.

robo3d.com

Share everything you make

Connect with [@robo3d](https://twitter.com/robo3d) [#robo3d](https://www.instagram.com/robo3d) and show the world what you're up to!



Owner's manual

To learn more about your Robo C2 and take a closer look at its full capabilities, check out the online Owner's Manual:

robo3d.com/manual